

Region 3 Saxophone (All) All-Region Audition Music

Set 1 Selection 1

Andante ♩ = 70 Section 1.1

1 *p* *cresc.*

5 Section 1.2 *pp* *velato*

9 Section 1.3

11 Section 1.4

15 Section 1.5

19 Section 1.6

21

22 *strigendo* *cresc.*

24

25

26 *ff*

Region 3 Saxophone (All) All-Region Audition Music

Set 1 Selection 2

$\text{♩} = 80 - 100$ Section 2.1

1 *meno*

2 3

4 Section 2.2

5 6 7 *ff* *p dolce*

8 Section 2.3

9 *a tempo*

10 *p* *ff*

11 Section 2.4

12 13

14 Section 2.5

15 16

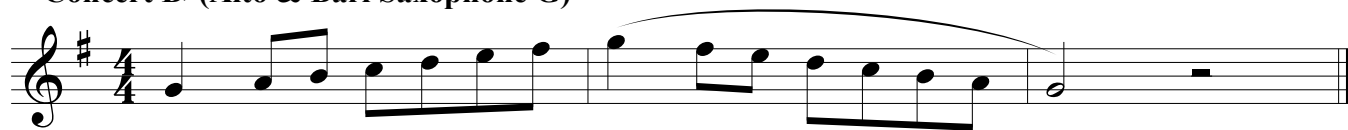
17 Section 2.6

18 19

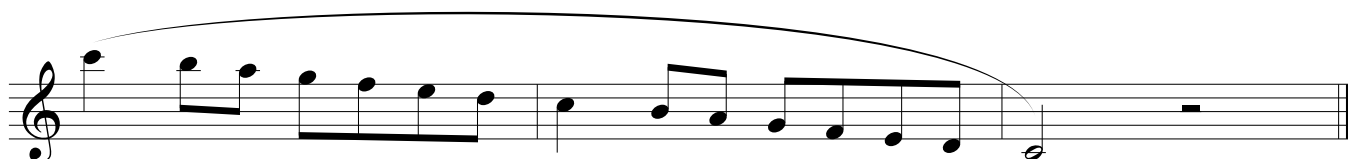
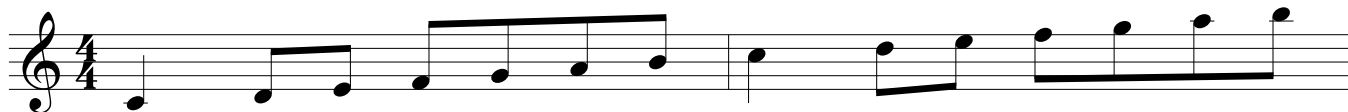
Region 3 MS Alto & Bari Saxophone All-Region Scales

Scales must be performed by memory at the auditions

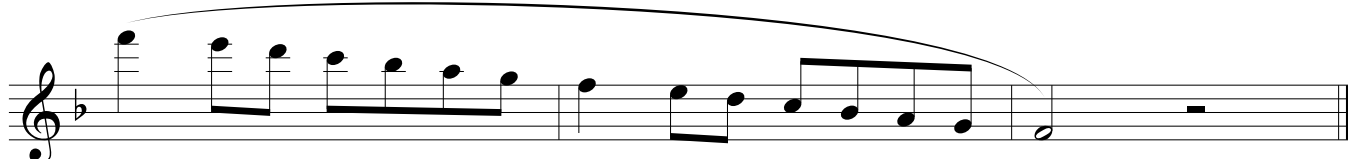
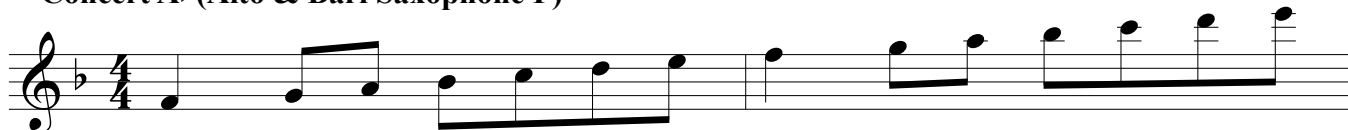
Concert B \flat (Alto & Bari Saxophone G)



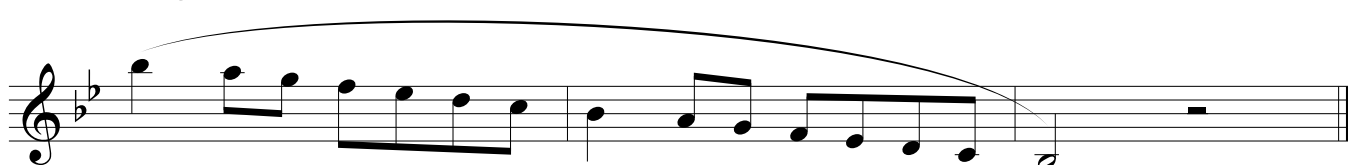
Concert E \flat (Alto & Bari Saxophone C)



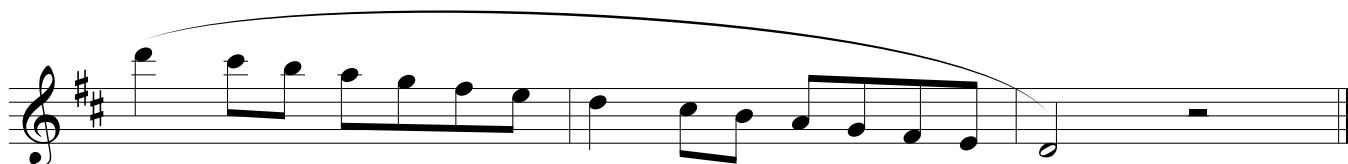
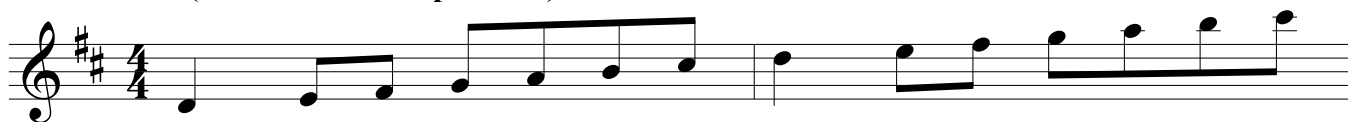
Concert A \flat (Alto & Bari Saxophone F)



Concert D \flat (Alto & Bari Saxophone B \flat)



Concert F (Alto & Bari Saxophone D)

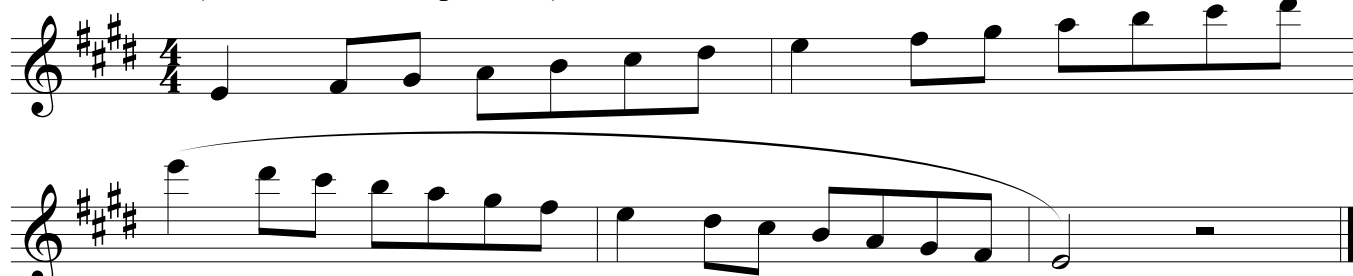


Concert C (Alto & Bari Saxophone A)



Musical notation for Concert C (Alto & Bari Saxophone A) in 4/4 time, key of C major. The scale is written on a single staff, starting on middle C and ascending to the next C. The notes are: C4, D4, E4, F4, G4, A4, B4, C5. The piece concludes with a whole rest on the final C5.

Concert G (Alto & Bari Saxophone E)



Musical notation for Concert G (Alto & Bari Saxophone E) in 4/4 time, key of G major. The scale is written on a single staff, starting on G4 and ascending to the next G. The notes are: G4, A4, B4, C5, D5, E5, F5, G5. The piece concludes with a whole rest on the final G5.

Chromatic



Musical notation for Chromatic scale in 4/4 time. The scale is written on a single staff, starting on middle C and ascending chromatically to the next C. The notes are: C4, C#4, D4, D#4, E4, E#4, F4, F#4, G4, G#4, A4, A#4, B4, B#4, C5. The piece concludes with a whole rest on the final C5.

All-Region Assignment Calendar

All etude & scale pass offs should be performed at a Level 3 performance standard (refer to Performance Standard rubric). Scales must be performed by memory. You do not have to do your pass offs in a specific order.
DO NOT wait until the last minute to do your pass offs. All events & assignments listed below are required.

August 17th - Saturday of Sectionals!

August 19th-22nd - First week of after school sectionals

August 30th - 1 scale/1 etude pass off due

September 6th - 1 scale/1 etude pass off due

September 13th - 1 scale/1 etude pass off due

September 20th - 1 scale/1 etude pass off due

September 27th - 1 scale/1 etude pass off due

September 28th - RISD Master Class @ LHJH (morning time TBD)

October 4th - 1 scale/1 etude pass off due

October 11th - 1 scale/1 etude pass off due

October 18th - 1 scale/1 etude pass off due

October 24th - Mock Auditions, 4-6 PM @ RWJH

October 25th - 1 scale/1 etude pass off due

November 1st - 1 scale/1 etude pass off due & All-Region BINGO Due

November 8th - 1 scale/1 etude pass off due & All-Region Audience Assignment Due

November 9th-15th - perform for as many people as you can this week

November 16th - AUDITION DAY!!

All Day @ North Mesquite HS

MUSIC PERFORMANCE STANDARDS

Use this rubric to help you in your All-Region preparations. Class pass-offs should be performed at a Level 3. Your goal is to reach Level 4 or 5 by audition day.

LEVEL 1

There is a SUPERFICIAL level of preparation. Wrong notes & rhythms are a constant distraction. Little or no attention to articulation & dynamics is evident.

LEVEL 2

An awareness of the key is present, though FREQUENT ERRORS may occur in notes & rhythms. Inconsistencies in tone quality may exist outside the comfortable register of the instrument. Tempos are constant, but may be a lot slower than required. There is some dynamic contrast. Frequent or occasional stops prevent any meaningful musical communication.

LEVEL 3

Comprehension is demonstrated, as note & rhythmic errors are ALMOST NONEXISTENT. Stops (if any) are minor & recovered-from quickly. Rhythms are performed correctly but may be uneven or sometimes change tempo. Dynamics are present & CONVINCING. Correct articulation is present but may be inconsistent. Tone quality is good but may suffer in technical passages. Phrasing has been addressed. Occasional displays of musical expression which elevate the piece beyond mere notes.

LEVEL 4

Notes, rhythms, articulations, dynamics & phrasing are correct and PERFORMED CONFIDENTLY. Slight errors are handled without stopping. Tempos are appropriate for the the etude & the skill & musicianship of the performer. The performance would always receive a Division 1 rating by UIL standards & may qualify the performer for membership in the All-Region Band!

LEVEL 5

The performer executes ALL of the technical demands of the piece fluently. Minor inconsistencies in performance. Moments of true artistic expression are frequent as all elements of well-prepared performance are in place. The performance would be worthy of Outstanding Soloist recognition at a solo competition & would GUARANTEE the performer membership in the All-Region Band!